



# LONGBARN RESIDENTS' ASSOCIATION

"Working together for our Community"

Registered Charity No. 1170309



## NEW HIGHWAY RESTRICTIONS TO IMPROVE ROAD SAFETY NEAR CHRIST CHURCH SCHOOL

Concerns regarding road safety have featured regularly in LRA Land, at our Residents' Meetings, in our Newsletter, & on Facebook, especially reflecting near misses concerning our children during the last year. After concerted action by Longbarn Residents' Association, Warrington Borough Council has opened up consultation concerning new highway restrictions ~ the following information has been reproduced from The Warrington Guardian (published 2 February 2023).

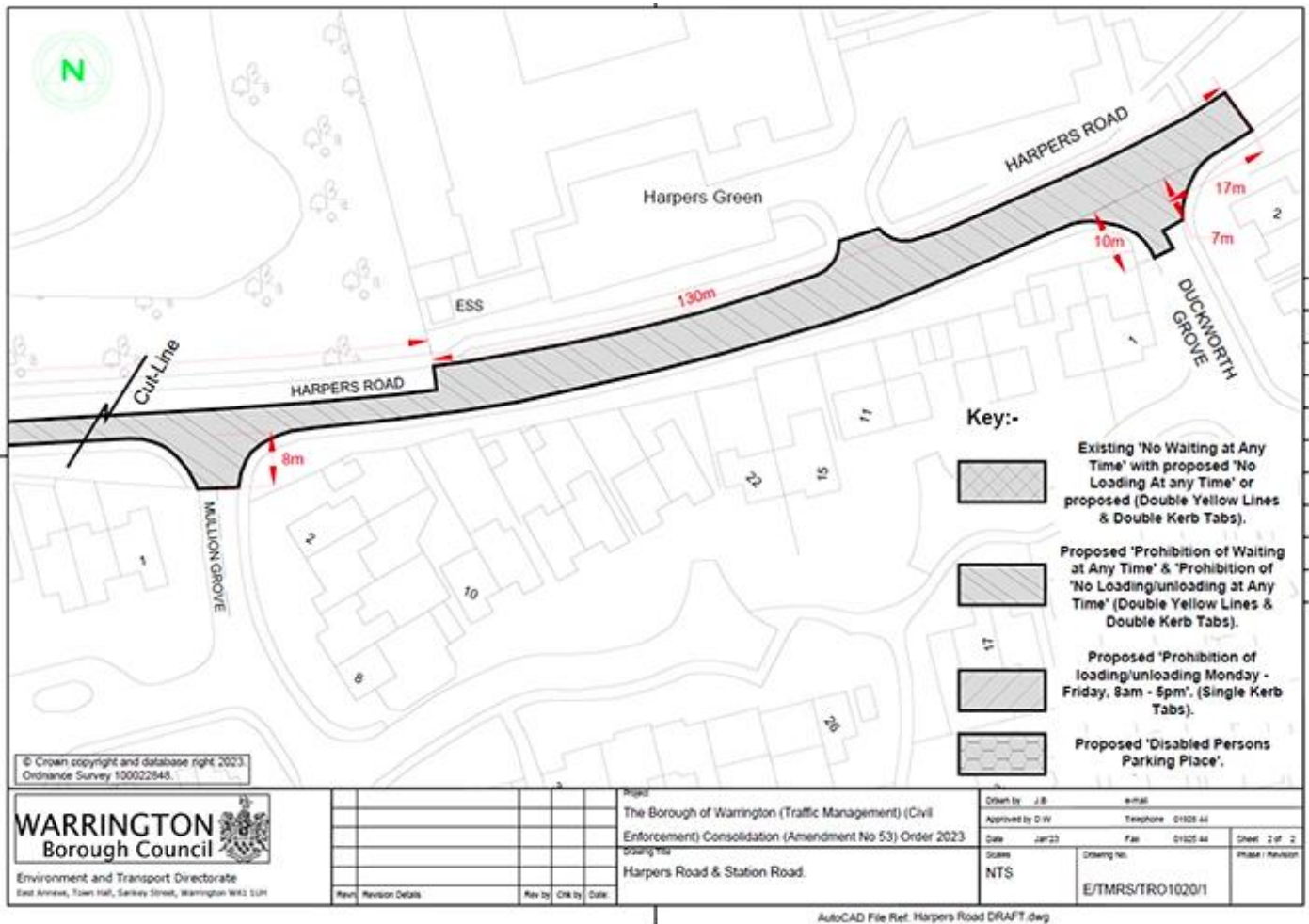
This is now the opportunity to have your say, & we invite you to back the proposals by sending letters of support to Warrington Borough Council at [TRorepresentations@warrington.gov.uk](mailto:TRorepresentations@warrington.gov.uk) by 23 February 2023. You can say as little or as much as you wish about the proposals. But as a minimum we encourage our residents to send a brief email of support.

-----

**HIGHWAY planners are proposing to introduce various highway restrictions to help improve road safety near a Padgate primary school.**

The proposed measures by Warrington Borough Council are to improve road safety by improving visibility at crossing points and preventing parking at junctions and within the immediate vicinity of Chris Church C of E Primary School. Disabled Persons Parking Places are provided close to the school entrance.





**Notice is hereby given** that the Council proposes to make an Order under Sections 1, 2, 4, 32, 35 and Part IV of Schedule 9 to the Road Traffic Regulation Act 1984 and of all other enabling powers. The effect of the Order will be as follows: –

1. The Borough of Warrington (Traffic Management) (Civil Enforcement) Consolidation Order 2018, is hereby further varied or amended as follows:-

(a) In the 3<sup>rd</sup> Schedule by the **deletion** of: –

**NO WAITING AT ANY TIME**

Harpers Road (North Side)	From its junction with Station Road for a distance of 15 metres, in an easterly direction.
Harpers Road (South Side)	From its junction with Station Road South to a point 6 metres east of its junction with Guildford Close.

(b) In the 14<sup>th</sup> Schedule by the **deletion** of: –

**NO WAITING BETWEEN THE HOURS OF 8:00AM TO 5:00PM, MONDAY TO FRIDAY**

Station Road South (West Side)	Between its junction with Harpers Road and a point 47 metres north of its junction with Harpers Road.
--------------------------------	---

(c) In the 92<sup>nd</sup> Schedule by the **deletion** of: –

**BUS STOP CLEARWAYS**

Harpers Road	From a point 15 metres east of its junction with Station Road South for a distance of 25 metres, in an easterly direction.
--------------	--

(North Side)	
--------------	--

(d) In the 93<sup>rd</sup> Schedule by the **deletion** of: –

**NO STOPPING ON SCHOOL ENTRANCE MARKINGS BETWEEN THE HOURS OF 8:00AM TO 5:00PM, MONDAY TO FRIDAY**

Harpers Road (North Side)	From a point 40 metres east of its junction with Station Road South for a distance of 37.56 metres, in an easterly direction.
------------------------------	---

(e) In the 3<sup>rd</sup> Schedule by the **addition** of:-

**NO WAITING AT ANY TIME**

Duckworth Grove (South East Side)	From its junction with Harpers Road for a distance of 7 metres in a south easterly direction.
Duckworth Grove (South West Side)	From its junction with Harpers Road for a distance of 10 metres in a south easterly direction.
Harpers Road (North Side)	From its junction with Station Road for a distance of 18 metres in an easterly direction.
Harpers Road (North Side)	From a point 186 metres east of its junction with Station Road for a distance of 130 metres in a north easterly direction.
Harpers Road (South Side)	From its junction with Station Road in an easterly direction to a point 17 metres north east of its junction with Duckworth Grove.
Mullion Grove (Both Sides)	From its junction with Harpers Road for a distance of 8 metres in a southerly direction.

(f) In the 14<sup>th</sup> Schedule by the **addition** of: –

**NO WAITING BETWEEN THE HOURS OF 8:00AM TO 5:00PM, MONDAY TO FRIDAY**

Station Road (West Side)	Between its junction with Harpers Road and a point 47 metres north of its junction with Harpers Road.
-----------------------------	---

(g) In the 71<sup>st</sup> Schedule by the **addition** of: –

**NO LOADING & UNLOADING AT ANY TIME**

Duckworth Grove (South East Side)	From its junction with Harpers Road for a distance of 7 metres in a south easterly direction.
Duckworth Grove (South West Side)	From its junction with Harpers Road for a distance of 10 metres in a south easterly direction.

Harpers Road (North Side)	From its junction with Station Road for a distance of 18 metres in an easterly direction.
Harpers Road (North Side)	From a point 186 metres east of its junction with Station Road for a distance of 130 metres in a north easterly direction.
Harpers Road (South Side)	From its junction with Station Road in an easterly direction to a point 17 metres north east of its junction with Duckworth Grove.
Mullion Grove (Both Sides)	From its junction with Harpers Road for a distance of 8 metres in a southerly direction.
Station Road (East Side)	From a point 27 metres south of its junction with Harpers Road to a point 23.8 metres north of its junction with Harpers Road.
Station Road (West Side)	From its junction with Harpers Road for a distance of 33 metres in a southerly direction.

(h) In the 79<sup>th</sup> Schedule by the **addition** of: –

**DISABLED PERSONS PARKING PLACES**

<b>Column 1</b> <b>Areas of Highway Designated as Disabled Persons' Parking Places. Each Area described below in this column being an area forming part of the carriageway of a specific highway, as a designated Disabled Persons' Parking Place</b>	<b>Column 2</b> <b>Special Manner of Standing of Vehicle in Parking Place</b>
All that part of the north side of <b>Harpers Road</b> which is bounded on the north side by so much of the edge of the carriageway of that highway as extends from a point 79.56 metres east of its junction with Station Road, in an easterly direction for a distance of 13.2 metres, all measured along the said road and which has a width throughout of 2.7 metres.	Parallel to the kerb

(i) In the 92<sup>nd</sup> Schedule by the **addition** of: –

**BUS STOP CLEARWAYS**

Harpers Road (North Side)	From a point 18 metres east of its junction with Station Road for a distance of 24 metres, in an easterly direction.
------------------------------	--

(j) In the 93<sup>rd</sup> Schedule by the **addition** of: –

**NO STOPPING ON SCHOOL ENTRANCE MARKINGS BETWEEN THE HOURS OF 8:00AM TO 5:00PM, MONDAY TO FRIDAY**

Harpers Road (North Side)	From a point 42 metres east of its junction with Station Road for a distance of 37.56 metres, in an easterly direction.
------------------------------	---

**ADDITIONAL SCHEDULE/AMENDED ARTICLE**

(k) By the addition of a new Schedule and the following entry thereunder: –

## SCHEDULE 78d

### NO LOADING AND UNLOADING BETWEEN THE HOURS OF 8:00AM TO 5:00PM, MONDAY TO FRIDAY

Station Road (West Side)	From its junction with Harpers Road for a distance of 47 metres in a northerly direction.
-----------------------------	---

(l) By the amendment of Articles 15 & 53(a) being the addition of Schedule 78d to the said Articles.

Deposited documents may be viewed on-line at <https://www.warrington.gov.uk/permanent-traffic-regulation-orders> or Contact Warrington, 1 Time Square, Warrington, WA1 2NT between 9am & 5pm, Monday to Friday.

All representations both in support or objecting to the proposals must be in writing either by post or delivered by hand to Legal Services, East Annexe, Town Hall, Sankey Street, Warrington, WA1 1UH or emailed to [TROrepresentations@warrington.gov.uk](mailto:TROrepresentations@warrington.gov.uk) by **23<sup>rd</sup> February 2023** and all objections must specify the grounds on which they are made.

Please note that all representations received may be considered in public by the Council and that the substance of any representation together with the name and address of the person making it could become available for public inspection.

Address: 1<sup>st</sup> Floor, Padgate Library, Insall Road, Fearnhead, Warrington, Cheshire WA2 0HD

Email: [lrsecretary15@gmail.com](mailto:lrsecretary15@gmail.com) Telephone: 01925 820647 (Answerphone)

Member of National Organisation of Residents' Associations



**"Working together for our Community"**